

# Apprenticeship and Industry Training

---

## Electrician Curriculum Guide

003 (2022)



Apprenticeship  
and Industry  
Training

**ALBERTA ADVANCED EDUCATION**

Electrician: apprenticeship education program curriculum guide

ISBN 978-1-4601-5192-1

ALL RIGHTS RESERVED:

© 2022, Her Majesty the Queen in right of the Province of Alberta, as represented by the Minister of Alberta Advanced Education, 19th floor, Commerce Place, Edmonton, Alberta, Canada, T5J 4L5. All rights reserved. No part of this material may be reproduced in any form or by any means, without the prior written consent of the Minister of Advanced Education Province of Alberta, Canada.

**Electrician  
Table of Contents**

**Apprenticeship .....2**  
**Apprenticeship and Industry Training System .....2**  
**Apprentice Safety .....3**  
**Technical Training.....3**  
**Procedures for Recommending Revisions to the Curriculum Guide .....4**  
**Apprenticeship Route toward Academic Credential .....5**  
**Electrician Training Profile .....6**

**CURRICULUM GUIDE**

**First Period Technical Training.....13**  
**Second Period Technical Training.....22**  
**Third Period Technical Training.....31**  
**Fourth Period Technical Training .....37**

## Apprenticeship

Apprenticeship is post-secondary education with a difference. Apprenticeship begins with finding a sponsor. Sponsors guide apprentices, and support on-the-job learning through provision of mentorship. Approximately 80 per cent of an apprentice's time is spent on the job under the supervision of a certified journeyman or qualified tradesperson. The other 20 per cent involves technical training provided at, or through, a post-secondary institution (PSI) – usually a college or technical institute.

To receive their post-secondary credential, apprentices must learn theory and skills, and they must pass examinations. Criteria for the program—including the content and delivery of technical training—are developed and updated by the Registrar.

The graduate of the Electrician apprenticeship education program is an individual who will be able to:

- have a thorough knowledge and understanding of electrical theory and its application to lighting, power and control equipment
- layout and install the various electrical circuits in residential, commercial, industrial and institutional complexes and buildings
- implement the instructions given in plans and specifications pertaining to electrical installations
- be thoroughly familiar with the safety requirements for electrical installations
- be capable of trouble shooting and maintaining electrical systems and equipment
- competently use the test instruments and various tools necessary to perform tasks
- be familiar with the work of other tradespeople in the construction industry and with the different types of building construction
- perform assigned tasks in accordance with quality and production standards required by industry

### Apprenticeship and Industry Training System

Alberta's apprenticeship programs are supported by industry stakeholders that ensures a highly skilled, internationally competitive workforce in the province. The Registrar establishes the educational standards and provides direction to the system supported by industry and the PSI's. The Ministry of Advanced Education provides the legislative framework and administrative support for the apprenticeship and industry training system.

**Special thanks are offered to the following industry members who contributed to the development of the standard:**

Mr. D. Tangedal..... Athabasca  
Mr. M. Engler..... Slave Lake  
Mr. D. Kinley..... Calgary  
Mr. C. Lofthaug..... Edmonton  
Mr. K. Maclean ..... Fort McMurray  
Ms. C. McMillan..... Cochrane  
Mr. N. Moffatt..... Calgary  
Mr. C. Rauschnig ..... Edmonton  
Mr. D. Chapman..... Edmonton  
Mr. S. Dyrkach..... Beaverlodge  
Mr. D. Greene..... Olds  
Mr. K. Helmer ..... Lloydminster  
Mr. M. Kukura..... Red Deer  
Mr. S. Muggridge..... Brooks

## Alberta Government

Alberta Advanced Education works with industry, sponsor and employee organizations and technical training providers to:

- facilitate industry's development and maintenance of training and certification standards
- provide registration and counselling services to apprentices and sponsors
- coordinate technical training in collaboration with training providers
- certify apprentices and others who meet industry standards

### Apprentice Safety

Safe working procedures and conditions, incident/injury prevention, and the preservation of health are of primary importance in apprenticeship programs in Alberta. These responsibilities are shared and require the joint efforts of government, sponsors, employees, apprentices and the public. Therefore, it is imperative that all parties are aware of circumstances that may lead to injury or harm.

Safe learning experiences and healthy environments can be created by controlling the variables and behaviours that may contribute to or cause an incident or injury. By practicing a safe and healthy attitude, everyone can enjoy the benefit of an incident and injury free environment.

### Occupational Health and Safety

Persons engaged in, or supporting an individual in an experiential learning environment are often exposed to more worksite hazards than in other forms of traditional post-secondary education and therefore should be familiar with and apply the Occupational Health and Safety Act, Regulations and Code when dealing with personal safety and the special safety rules that apply to all daily tasks.

Occupational Health and Safety-OHS (a division of Alberta Labour and Immigration) conducts periodic inspections of workplaces to ensure that safety regulations for industry are being observed.

Additional information is available at [www.alberta.ca/occupational-health-safety.aspx](http://www.alberta.ca/occupational-health-safety.aspx)

### Technical Training

Apprenticeship technical training is delivered by the PSI's throughout Alberta. The PSI's are committed to delivering the technical training component of Alberta apprenticeship programs in a safe, efficient and effective manner. All PSI's place a strong emphasis on safety that complements safe workplace practices towards the development of a culture of safety for all professions.

The PSI's work with industry and Alberta Advanced Education to enhance access and responsiveness to industry needs through the delivery of the technical training component of apprenticeship programs across the province. They develop curriculum from the curriculum guides established by the Registrar in consultation with the PSI's and industry and provide the technical training to apprentices.

The following PSI's deliver Electrician trade apprenticeship technical training:

Northern Alberta Institute of Technology  
Lakeland College  
Keyano College  
Southern Alberta Institute of Technology  
Northern Lakes College

Grande Prairie Regional College  
Lethbridge College  
Medicine Hat College (Brooks Campus)  
Red Deer College  
Portage College

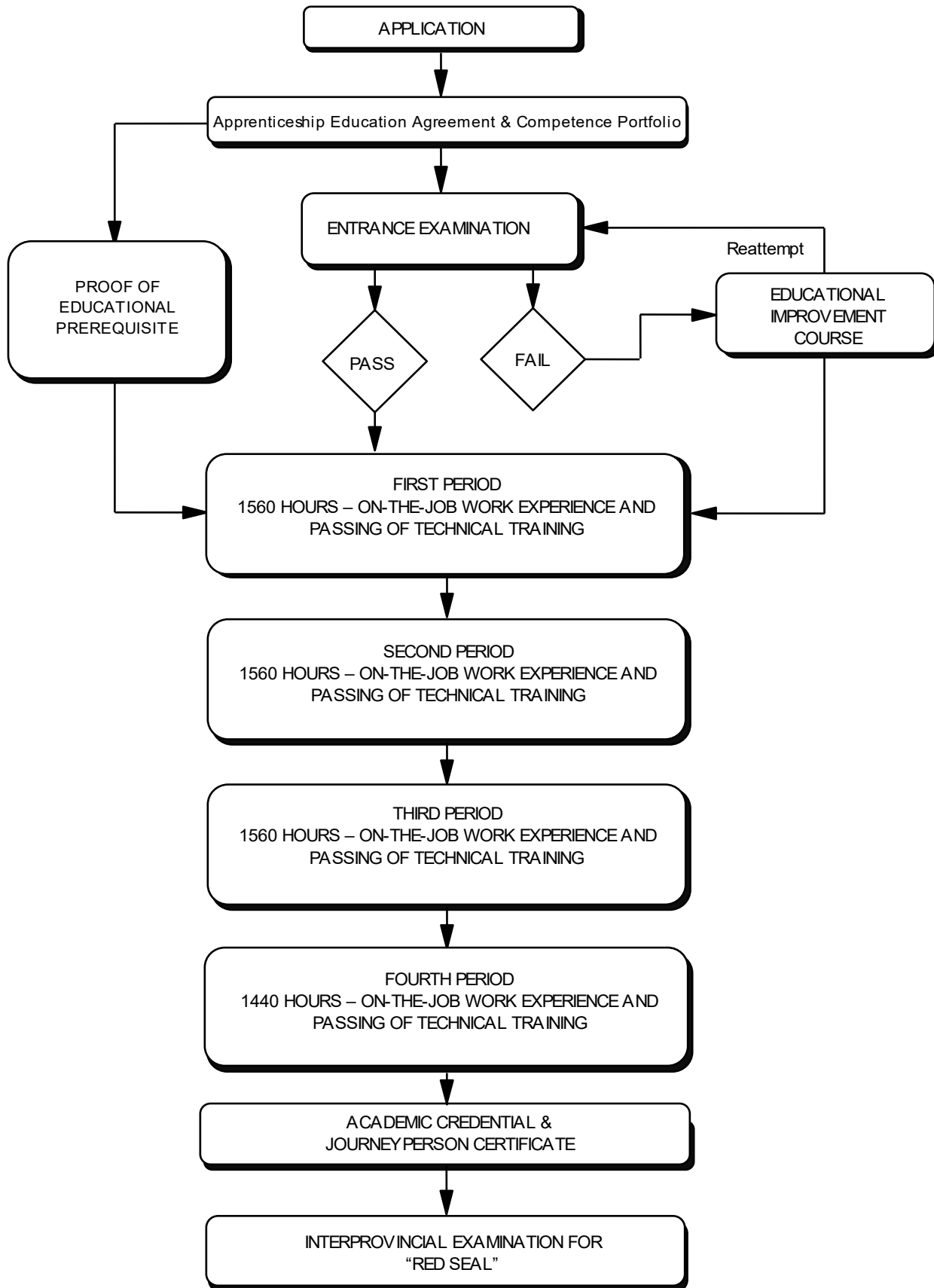
## **Procedures for Recommending Revisions to the Curriculum Guide**

Any concerned individual or group in the province of Alberta may make recommendations for change by writing to:

Registrar of Apprenticeship Programs  
c/o Apprenticeship Delivery and Industry Support Services  
Apprenticeship Delivery and Industry Support  
Advanced Education  
19th floor, Commerce Place  
10155 102 Street NW  
Edmonton AB T5J 4L5

It is requested that recommendations for change refer to specific areas and state reference used.

### Apprenticeship Route toward Academic Credential



**Electrician Training Profile  
FIRST PERIOD  
(8 Weeks 30 Hours per Week – Total of 240 Hours)**

**SECTION ONE**

**STANDARD & SPECIFIC  
WORKPLACE SAFETY**  
5%



**A**  
Safety Legislation,  
Regulations & Industry  
Policy in the Trades  
17%

**B**  
Climbing, Lifting, Rigging &  
Hoisting  
16%

**C**  
Hazardous Materials & Fire  
Protection  
17%

**D**  
Apprenticeship Training  
Program  
17%

**E**  
Electrical Safety  
33%

**SECTION TWO**

**CIRCUIT FUNDAMENTALS**  
33%



**A**  
First Period Math  
Applications  
13%

**B**  
Current, Voltage, and  
Resistance  
13%

**C**  
Series Resistive Circuits  
13%

**D**  
Parallel Resistive Circuits  
12%

**E**  
Series-Parallel Resistive  
Circuits  
18%

**F**  
Edison 3-Wire Distribution  
Systems  
13%

**G**  
Work, Energy, Power and  
Efficiency  
18%

**SECTION THREE**

**EMF SOURCES**  
10%



**A**  
Methods of Producing EMF  
15%

**B**  
Cells and Batteries  
31%

**C**  
Magnetism and  
Electromagnetism  
39%

**D**  
Generators  
15%

**SECTION FOUR**

**LAB FUNDAMENTALS**  
26%



**A**  
Meters  
7%

**B**  
Conductors  
10%

**C**  
Splicing and Terminating  
(Low Voltage)  
3%

**D**  
Resistors  
3%

**E**  
Switching Circuits  
23%

**F**  
Relays and Controls  
22%

**G**  
Extra Low Voltage Switching  
(0-30v)  
16%

**H**  
Alarm Systems and Smoke  
Alarms  
16%



**SECTION FIVE**

**CANADIAN ELECTRICAL CODE  
PART I AND DRAWINGS**  
26%



<b>A</b>	<b>B</b>	<b>C</b>
Introduction to Code 6%	General Rules – Section 2 6%	Conductor Material and Sizes – Section 4 10%
<b>D</b>	<b>E</b>	<b>F</b>
Service and Grounding Requirements 10%	Service Feeders and Branch Circuits – Section 8 10%	Wiring Methods – Section 12 19%
<b>G</b>	<b>H</b>	<b>I</b>
Installation of Electrical Equipment – Section 26 6%	Installation of Lighting Equipment – Section 30 7%	Class 1 and Class 2 Circuits – Section 16 3%
<b>J</b>	<b>K</b>	<b>L</b>
Orthographic Projection and Diagrams 3%	Drawings 7%	Drawing Interpretation 13%

**SECOND PERIOD**  
**(8 Weeks 30 Hours per Week – Total of 240 Hours)**

**SECTION ONE**

<b>ALTERNATING CURRENT (ac) CIRCUIT PROPERTIES</b> 15%	<b>A</b>	<b>B</b>	<b>C</b>
	Second Period Math Applications 16%	Fundamentals of Alternating Current 17%	Principles of ac Circuits 16%
	<b>D</b>	<b>E</b>	<b>F</b>
	Inductance and Inductive Reactance 17%	Capacitance and Capacitive Reactance 17%	Power Relationships 17%

**SECTION TWO**

<b>RLC CIRCUITS</b> 31%	<b>A</b>	<b>B</b>	<b>C</b>
	Series ac Circuits 14%	Series Resistive-Reactive Circuits 16%	Series RLC Circuits 19%
	<b>D</b>	<b>E</b>	<b>F</b>
	Introduction to Parallel ac Circuits 13%	Parallel RLC Circuits 19%	Power Factor Correction Single Phase 19%

**SECTION THREE**

<b>HEATING AND COOLING SYSTEMS</b> 17%	<b>A</b>	<b>B</b>	<b>C</b>
	Principles of Automatic Heating and Cooling Controls 19%	Temperature Sensing and Control Devices 10%	Basic Gas-Fired Forced-Air Heating Systems 14%
	<b>D</b>	<b>E</b>	<b>F</b>
	Efficient Gas-Fired Forced-Air Heating Systems 19%	Basic Hot Water Heating Systems 9%	Cooling Systems 14%
	<b>E</b>	<b>H</b>	
	HVAC Rooftop Units 10%	Heat Trace 5%	

**SECTION FOUR**

<b>MAGNETIC CONTROLS AND SWITCHING CIRCUITS</b> 18%	<b>A</b>	<b>B</b>	<b>C</b>
	Electrical Control Drawings 5%	Relays and Contactors 14%	Timers and Smart Relays 10%
	<b>D</b>	<b>E</b>	<b>F</b>
	Protection Devices 10%	Motor Starters 17%	Diagram Conversion 14%
	<b>G</b>	<b>H</b>	
	Single Motor Control/ Pilot Devices and Symbols 16%	Reversing Motor Starters 14%	

**SECTION FIVE**

**CANADIAN ELECTRICAL CODE  
PART I / PLANS AND DIAGRAMS** ⇒  
**19%**

<b>A</b>	<b>B</b>	<b>C</b>
Service Conductor Ampacity for a Single Dwelling 9%	Services and Service Equipment for a Single Dwelling 11%	Feeder and Branch Distribution Requirements for a Single Dwelling 6%
<b>D</b>	<b>E</b>	<b>F</b>
Grounding Requirements for a Single Dwelling 8%	Service Ampacity for Apartments and Similar Buildings 17%	Service Protection and Control for Apartments and Similar Buildings 9%
<b>G</b>	<b>H</b>	<b>I</b>
Capacitor Bank Installations 4%	Pools, Mobile Home and Temporary Wiring – Sections 68, 72 and 76 9%	Diagrams 9%
<b>J</b>	<b>K</b>	
Specifications 9%	Drawings and Plans 9%	

**THIRD PERIOD**  
**(8 Weeks 30 Hours per Week – Total of 240 Hours)**

**SECTION ONE**

<b>THREE PHASE PRINCIPLES</b> 41%	<b>A</b> Third Period Math Applications 12%	<b>B</b> Three-Phase Systems 4%	<b>C</b> Three-Phase Wye Connection 29%
	<b>D</b> Three-Phase Delta Connection 29%	<b>E</b> Three-Phase Delta Wye Connection 8%	<b>F</b> Three-Phase Power Calculations 6%
	<b>G</b> Three-Phase Measurement for Power Calculations 4%	<b>H</b> Three-Phase Power Factor Correction 8%	

**SECTION TWO**

<b>THREE-PHASE MOTOR PRINCIPLES</b> 23%	<b>A</b> Introduction to Three-Phase Induction Motors 22%	<b>B</b> Operation of Three-Phase Induction Motors 21%	<b>C</b> Three-Phase Motors and Starters 43%
	<b>D</b> Introduction to Variable Frequency Drives 14%		

**SECTION THREE**

<b>TRANSFORMERS</b> 14%	<b>A</b> Introduction to Transformers 12%	<b>B</b> Transformer Operation (Single-Phase Transformers) 23%	<b>C</b> Autotransformers 6%
	<b>D</b> Transformer Connections (Three-Phase Transformers) 41%	<b>E</b> Energy Measurement 18%	

**SECTION FOUR**

<b>CANADIAN ELECTRICAL CODE</b> 22%	<b>A</b> Grounding and Bonding - Section 10 12%	<b>B</b> Protection and Control - Section 14 19%	<b>C</b> Installation of Equipment - Section 26 12%
	<b>D</b> Individual Motors 11%	<b>E</b> Motor Banks 11%	<b>F</b> Hazardous Locations – Section 18 23%
	<b>G</b> Class 1 Locations - Section 20 8%	<b>H</b> Corrosive and Wet Locations - Section 22 4%	

**FOURTH PERIOD**  
**(12 Weeks 30 Hours per Week – Total of 360 Hours)**

**SECTION ONE**

<b>MACHINES</b>  17%	⇒	<b>A</b>	<b>B</b>	<b>C</b>
		Fourth Period Math Applications 22%	Alternators and Generators 13%	Direct Current (dc) Machines 16%
		<b>D</b>	<b>E</b>	<b>F</b>
		Alternators 26%	Synchronous Motors 13%	Single-Phase Motors 10%

**SECTION TWO**

<b>CONTROL AND SWITCHING/ PLC</b>  21%	⇒	<b>A</b>	<b>B</b>	<b>C</b>
		Drawings and Basic Circuits 11%	Diagram Conversion 11%	Controls and Switching Circuits 24%
		<b>D</b>	<b>E</b>	
		Special Control Circuits 14%	Programmable Logic Controllers 40%	

**SECTION THREE**

<b>FIRE ALARM SYSTEMS</b>  12%	⇒	<b>A</b>	<b>B</b>	<b>C</b>
		Fire Detection and Alarm Systems 17%	Fire Detection and Alarm System Regulations 17%	Fire Alarm System Occupancy Classifications 14%
		<b>D</b>	<b>E</b>	<b>F</b>
		Wiring Procedures for Fire Alarm Systems 28%	Arc Flash and Electrical Safety 14%	Interprovincial Standards Red Seal Program 5%
		<b>G</b>		
		Workplace Coaching Skills 5%		

**SECTION FOUR**

<b>APPLICATIONS OF ELECTRONICS</b>  19%	⇒	<b>A</b>	<b>B</b>	<b>C</b>
		Rectifiers and Battery Chargers 29%	Welders and Filters 14%	Controlled Rectifiers 14%
		<b>D</b>	<b>E</b>	<b>F</b>
		Uninterruptible Power Supply Systems 14%	Variable Frequency Drives 14%	Cathodic Protection 3%
		<b>G</b>		
		Renewable Energy Systems 12%		

**SECTION FIVE**

<b>CANADIAN ELECTRICAL CODE PART 1 / APPLICATIONS AND SAFETY</b>  31%	⇒	<b>A</b>	<b>B</b>	<b>C</b>
		Conductors – Section 4 7%	Grounding and Bonding and Distribution Layout – Section 10 5%	Wiring Methods – Section 12 13%
		<b>D</b>	<b>E</b>	<b>F</b>
		Protection and Control – Section 14 11%	Lighting, Emergency Systems and Unit Equipment – Sections 30 and 46 9%	Communication Systems and Cabling – Sections 54, 56 and 60 3%
		<b>G</b>	<b>H</b>	<b>I</b>
		Electrical Requirements for a Single Dwelling – Section 8 4%	Electrical Requirements for Apartments – Section 8 5%	Individual Motors and Motor Banks – Section 28 5%

<b>J</b>	<b>K</b>	<b>L</b>
Installation of Capacitors and Transformers – Section 26 5%	Electric Welders – Section 42 2%	Hazardous and Special Locations – Sections 18, 20 and 22 11%
<b>M</b>	<b>N</b>	<b>O</b>
Electrical Installations in Patient Care Areas – Section 24 2%	High-Voltage – Section 36 9%	Occupational Applications 9%

**FIRST PERIOD TECHNICAL TRAINING  
ELECTRICIAN TRADE  
CURRICULUM GUIDE**

*UPON SUCCESSFUL COMPLETION OF THIS PROGRAM THE APPRENTICE SHOULD BE ABLE TO PERFORM THE FOLLOWING OUTCOMES AND OBJECTIVES.*

**SECTION ONE: ..... STANDARD & SPECIFIC WORKPLACE SAFETY .....5%**

**A. Safety Legislation, Regulations & Industry Policy in the Trades ..... 17%**

**Outcome:**     ***Apply legislation, regulations and practices ensuring safe work in this trade.***

1.     Demonstrate the application of the Occupational Health and Safety Act, Regulation and Code.
2.     Describe the sponsor's and employee's role with Occupational Health and Safety (OH&S) regulations, Worksite Hazardous Materials Information Systems (WHMIS), fire regulations, Workers Compensation Board regulations and related advisory bodies and agencies.
3.     Describe industry practices for hazard assessment and control procedures.
4.     Describe the responsibilities of worker and sponsors to apply emergency procedures.
5.     Describe tradesperson attitudes with respect to housekeeping, personal protective equipment and emergency procedures.
6.     Describe the roles and responsibilities of sponsors and employees with the selection and use of personal protective equipment (PPE).
7.     Maintain required PPE for tasks.
8.     Use required PPE for tasks.

**B. Climbing, Lifting, Rigging and Hoisting ..... 16%**

**Outcome:**     ***Use industry standard practices for climbing, lifting, rigging and hoisting in this trade.***

1.     Describe manual lifting procedures.
2.     Describe rigging hardware and associated safety factors.
3.     Select equipment for rigging loads.
4.     Describe hoisting and load moving procedures.
5.     Maintain personal protective equipment (PPE) for climbing, lifting and load moving equipment.
6.     Use PPE for climbing, lifting and load moving equipment.

**C. Hazardous Materials & Fire Protection.....17%**

**Outcome:**     ***Apply industry standard practices for hazardous materials and fire protection in this trade.***

1.     Describe roles, responsibilities, features and practices related to the Workplace Hazardous Materials Information System (WHMIS) program.
2.     Describe three key elements of WHMIS.
3.     Describe handling, storing and transporting procedures for hazardous material.
4.     Describe venting procedures when working with hazardous materials.
5.     Describe hazards, classes, procedures and equipment related to fire protection.

**D. Apprenticeship Education Training Program.....17%**

**Outcome: Manage an apprenticeship to earn journeyperson certification.**

1. Describe the contractual responsibilities of the apprentice, sponsor and Alberta Apprenticeship and Industry Training.
2. Describe the purpose of the apprentice competency portfolio.
3. Describe the procedure for changing sponsors during an active apprenticeship.
4. Describe the purpose of the curriculum guide.
5. Describe the procedure for progressing through an apprenticeship.
6. Describe advancement opportunities in this trade.

**E. Electrical Safety .....33%**

**Outcome: Apply safe work practices for electricians.**

1. Identify the safe work practices to protect from arc flash hazards.
2. Identify and describe lockout procedures.
3. Identify the safe work practices to prevent electrical shock.
4. Describe the use of common hand tools and equipment related to the electrician trade.
5. Describe the use of common power and specialty tools related to the electrician trade.

**SECTION TWO: ..... CIRCUIT FUNDAMENTALS ..... 33%**

**A. First Period Math Applications.....13%**

**Outcome: Solve trade-related problems using basic mathematical skills.**

1. Recognize basic arithmetic symbols.
2. Add and subtract whole, decimal and fractional numbers.
3. Multiply and divide whole, decimal and fractional numbers.
4. State the correct sequence for arithmetical operations and solve equations which use brackets.
5. Apply the math skill required for transposition of equations in relation to Ohm's Law.

**B. Current, Voltage and Resistance .....13%**

**Outcome: Predict how changes in the value of voltage, current or resistance affects the circuit.**

1. Describe an electric current.
2. Describe voltage.
3. Describe resistance and state and apply Ohm's Law.
4. Connect and verify relationship between voltage, current and resistance according to Ohm's Law.

**C. Series Resistive Circuits.....13%**

**Outcome: Connect and analyze a series resistive circuit.**

1. Identify a series circuit.
2. Calculate resistance in a series circuit.



3. State and apply Kirchhoff's Voltage Law in a series circuit.
4. Calculate current in a series circuit.
5. Determine circuit values by applying ratio and proportion.
6. Solve series circuits using the voltage divider rule.
7. Determine the voltage drop across closed-or-open components in a series circuit.
8. Connect and analyze Kirchhoff's Voltage Law in a series resistive circuit.

**D. Parallel Resistive Circuits.....12%**

**Outcome: Connect and analyze parallel resistive circuit.**

1. Describe a parallel circuit.
2. Calculate resistance in a parallel circuit.
3. State and apply Kirchhoff's Current Law to a parallel circuit.
4. Describe the effects of an open circuit in a parallel circuit.
5. Solve branch circuit currents using the current divider principle.
6. Connect and analyze Kirchhoff's Current Law in a parallel resistive circuit.

**E. Series-Parallel Resistive Circuits.....18%**

**Outcome: Connect and analyze series-parallel resistive circuits.**

1. Identify resistors that are in series.
2. Identify resistors that are in parallel.
3. Calculate the total resistance of a series-parallel circuit.
4. Apply Kirchhoff's Current Law to a series-parallel circuit.
5. Apply Kirchhoff's Voltage Law to a series-parallel circuit.
6. Solve problems involving series-parallel circuits.
7. Connect and analyze the relationship of current, voltage and resistance in each part of a series-parallel circuit.

**F. Edison 3-Wire Distribution System..... 13%**

**Outcome: Connect and analyze an Edison 3-wire system.**

1. Identify the characteristics of an Edison 3-wire circuit.
2. Describe the properties of an Edison 3-wire circuit.
3. Describe and calculate the effects of a high resistance or broken neutral in an Edison 3-wire circuit.
4. Connect and analyze the effects of a high resistance or broken neutral in an Edison 3-wire system.

**G. Work, Energy, Power and Efficiency .....18%**

**Outcome: State and analyze the relationship between work, energy, power and efficiency.**

1. Describe mass, weight and force.
2. Describe work, energy and power.
3. Describe electrical relationships of work, energy and power.

4. Calculate efficiency, voltage drop and line loss.
5. Connect and analyze the power formulae.

**SECTION THREE: .....EMF SOURCES..... 10%**

**A. Methods of Producing EMF .....15%**

**Outcome:** *Identify the methods of producing Electromotive Force (EMF).*

1. Explain the production of EMF by using chemicals.
2. Explain the production of EMF by using heat.
3. Explain the production of EMF by using pressure.
4. Explain the production of EMF by using light.
5. Explain the production of EMF by using magnetism.
6. Explain the production of EMF by using electrostatics.

**B. Cells and Batteries .....31%**

**Outcome:** *Identify the requirements for installation and maintenance of batteries.*

1. Define the basic terminology of cells.
2. Describe the construction and operation of a basic primary cell.
3. Describe the construction and operation of three types of lead-acid batteries.
4. Describe the construction and operation of a nickel-cadmium battery.
5. Describe the construction and operation of a lithium battery.
6. Describe the hazards and precautions to be observed when charging batteries.
7. Describe the three common battery performance ratings.
8. Calculate the effects of battery internal resistance.

**C. Magnetism & Electromagnetism .....39%**

**Outcome:** *State the characteristics of magnetic and electromagnetic materials.*

1. Describe the properties of magnetic materials.
2. Define the terminology related to magnetism.
3. Describe electromagnetism and basic design for electromagnetic devices.
4. Describe how an induced voltage is generated.
5. Describe the process of electromagnetic induction.

**D. Generators .....15%**

**Outcome:** *Explain the generation of electricity in ac and dc generators.*

1. Describe the basic construction of a generator.
2. Describe how a generator produces a voltage and the factors affecting its value.
3. Describe how a generator can be connected to produce ac or dc to a load.

<b>SECTION FOUR:</b> .....	<b>LAB FUNDAMENTALS</b> .....	<b>26%</b>
<b>A. Meters</b> .....		<b>7%</b>
<b>Outcome:     <i>Use electrical meters to measure circuit properties.</i></b>		
1.	State the applications of the various meters.	
2.	List the precautions that must be observed when using meters.	
3.	Interpret meter readings.	
4.	Recognize the connections for various meters.	
5.	Connect and demonstrate proper range selection and connections of voltmeter, ammeter, ohmmeter and megohmmeter.	
<b>B. Conductors</b> .....		<b>10%</b>
<b>Outcome:     <i>Identify the properties of conductors, semiconductors insulators and fibre optic cables.</i></b>		
1.	State the types and forms of conductor materials.	
2.	Describe the electrical properties of conductors, semiconductors and insulators.	
3.	Describe the factors affecting resistance.	
4.	Calculate the cross-sectional area and resistance of conductors.	
5.	Calculate the approximate voltage drop due to conductor resistance.	
6.	State the installation methods required for fibre optic cable.	
7.	Determine the AWG wire size with a wire gauge.	
<b>C. Splicing and Terminating (Low Voltage)</b> .....		<b>3%</b>
<b>Outcome:     <i>Splice, tap and terminate conductors.</i></b>		
1.	Describe four classes of terminations or connections used in the electrical trade.	
2.	Describe the proper method for stripping conductors and insulating splices.	
3.	Describe three common wire connections.	
4.	Describe the techniques used for mechanical and compression splices and terminations.	
5.	Describe the problems specific to aluminium conductor splices and terminations.	
<b>D. Resistors</b> .....		<b>3%</b>
<b>Outcome:     <i>Identify resistor types and ratings.</i></b>		
1.	Describe two categories of resistors and their construction.	
2.	Describe the methods used to determine the ratings of fixed resistors.	
3.	Determine the resistance of a resistor using a four band colour code chart.	
<b>E. Switching Circuits</b> .....		<b>23%</b>
<b>Outcome:     <i>Design and connect switching circuits using schematic and wiring diagrams.</i></b>		
1.	Draw symbols that are commonly used in schematic and wiring diagrams.	
2.	Describe applications of various types of switches.	
3.	Draw schematic and wiring diagrams for typical lighting circuits.	

4. Describe how to connect a set of door chimes.
5. Connect and analyze a set of door chimes.
6. Connect and analyze the switching arrangement of various types of switches.

**F. Relays and Controls .....22%**

**Outcome: Connect and analyze relay control circuits.**

1. Define specific terms that are used when referring to control circuits.
2. Identify the parts of a relay.
3. Describe the operating principle of a relay.
4. Draw the symbols that are used in control circuits.
5. Draw schematic and wiring diagrams using a relay.
6. Connect and analyze circuits using relays.

**G. Extra Low Voltage Switching (0 – 30 V).....16%**

**Outcome: Connect and analyze extra low voltage switching circuits.**

1. Describe the basic concepts of an extra low voltage switching system.
2. State the advantages of an extra low voltage switching.
3. Describe the operation of an extra low voltage switching system.
4. Connect and analyze extra low voltage circuits.

**H. Alarm Systems and Smoke Alarms .....16%**

**Outcome: Connect and analyze alarm systems and smoke alarms.**

1. Identify various types of sensing and alarm devices used in alarm systems.
2. Describe the operation of a basic alarm system.
3. Identify the function and applications of smoke alarms and carbon monoxide alarms.
4. Describe the operation of a basic fire alarm system.
5. Connect and analyze an alarm system.
6. Connect and analyze a smoke alarm system.

**SECTION FIVE:.....CANADIAN ELECTRICAL CODE (CEC) PART I AND DRAWINGS.....26%**

**A. Introduction to Code .....6%**

**Outcome: Recognize the purpose and organization of the Canadian Electrical Code Part I and the Alberta Electrical STANDATA.**

1. Explain the purpose of the Canadian Electrical Code Part I.
2. Describe the procedures for the acceptance of the Canadian Electrical Code by the provinces and the local authorities.
3. Describe the function of the electrical STANDATA.
4. Describe the organizational layout of the CEC.
5. Locate specific information in the CEC using a variety of methods.
6. Identify those responsible for an electrical installation.

**B. General Rules – Section 2 .....6%**

**Outcome:** *Interpret the general rules in Section 2 of the CEC.*

1. Define the specific terms that apply to the first period code program.
2. Describe the administrative rules.
3. Describe the technical requirements.

**C. Conductor Material and Sizes – Section 4 .....10%**

**Outcome:** *Determine the conductors required for installations in Section 4 of the CEC.*

1. Define specific terms, that apply to the first period code program.
2. Apply specific rules to determine conductor sizes, using the appropriate tables and appendices.
3. Determine the allowable ampacity of a conductor given load current and conditions of use.
4. Determine the allowable ampacity of flexible cords and equipment wire and conditions of use.
5. Identify neutral conductors and determine their size.
6. State the CEC standards for conductor colours.

**D. Service and Grounding Requirements .....10%**

**Outcome:** *Determine the components, installation methods, grounding and bonding for a single dwelling.*

1. Define specific terms from Section 6 that apply to a residential occupancy.
2. Describe the wiring methods used for the installation of overhead services.
3. Describe the wiring methods used for the installation of underground services.
4. Describe the requirements for service equipment in a single dwelling.
5. Define specific terms from Section 10 that apply to a single dwelling.
6. Determine the grounding requirements for a single dwelling.
7. Determine the bonding requirements for a single dwelling.

**E. Service Feeders and Branch Circuits – Section 8.....10%**

**Outcome:** *Determine the loading on services, feeders and branch circuits for single dwellings.*

1. Define specific terms that apply to a residential occupancy.
2. Determine the minimum ampacity of service or feeder conductors supplying a single dwelling.
3. Determine the minimum required number of branch circuit positions for a single dwelling.
4. Determine the ampacity requirements for branch circuit conductors and ampere ratings of overcurrent devices applicable to a single dwelling.

**F. Wiring Methods – Section 12.....19%**

**Outcome:** *Determine installation wiring methods.*

1. Define specific terms that apply to a residential occupancy.
2. Identify the General Requirements 12-010 to 12-020.
3. Identify the sub-section of Conductors 12-100 to 12-120.

4. Describe the conditions for use of exposed wiring located outdoors.
5. Describe the conditions for use of non-metallic sheathed cable.
6. Describe the conditions for use of armoured and mineral-insulated cable.
7. Describe the conditions for use of raceways in general.
8. Describe the conditions for use of specific raceways.
9. Describe the installation of boxes, cabinets and outlets.

**G. Installation of Electrical Equipment – Section 26 .....6%**

**Outcome: Determine electrical requirements for a residential occupancy.**

1. Define specific terms that apply to the first period code program.
2. Apply specific rules that deal with the electrical installations in battery rooms.
3. Describe the information required when selecting a receptacle for a specific application.
4. Determine the branch circuit requirements, number and location of receptacles required for areas (other than kitchens) of a residential occupancy in general and specifically, a single dwelling.
5. Describe the operation and applications of GFCIs and AFCIs.
6. Determine the branch circuits required, the number and type of receptacles required and the location of each for a kitchen.
7. Determine where the disconnecting means for a furnace must be installed.

**H. Installation of Lighting Equipment – Section 30 .....7%**

**Outcome: Determine code requirements for lighting equipment.**

1. Define specific terms used in the lighting industry.
2. Describe the different types of electric lighting sources.
3. Define specific terms that apply to the first period code program.
4. Describe the general requirements for interior lighting equipment.
5. Describe the factors which relate to the location of lighting equipment.
6. Describe the factors which relate to the installation of lighting equipment.
7. Describe the methods of wiring various types of lighting equipment.
8. Describe the bonding requirements of lighting equipment.
9. Identify the ratings and control methods of lampholders.

**I. Class 1 and Class 2 Circuits - Section 16 .....3%**

**Outcome: Determine the code requirements for Class 1 and Class 2 circuits.**

1. Identify the terms and topics that apply to the first period code program.
2. Determine the requirements for Class 1 and Class 2 circuits.
3. Identify the Class 2 circuits in a typical single dwelling.

**J. Orthographic Projection and Diagrams .....3%**

**Outcome: Interpret orthographic projections, block, wiring and schematic diagrams.**

1. Describe the basic views of objects using orthographic projection.
2. Identify basic orthographic projections to views of a building.
3. Identify the lines found on a drawing.
4. Describe a block diagram and a wiring diagram.
5. Interpret electrical schematic drawings.

**K. Drawings .....7%**

**Outcome: Interpret construction drawings.**

1. Interpret dimensions from a drawing.
2. Determine dimensions from a drawing using the scale.
3. Identify electrical symbols.
4. Identify abbreviations used on drawings.
5. Interpret technical terms used on drawings.
6. State the different types of drawings and their uses in a set of construction drawings.
7. Describe the disciplines and types of drawings used in a set of construction drawings.

**L. Drawings Interpretation .....13%**

**Outcome: Interpret residential electrical construction drawings.**

1. Interpret information from a drawing.
2. Interpret a drawing of an overhead service for a single dwelling.
3. Interpret a drawing of an underground service for a single dwelling.
4. Interpret a partial floor plan of a typical residential electrical installation and do a material estimate.
5. Calculate the main service requirements for a single dwelling.

**SECOND PERIOD TECHNICAL TRAINING  
ELECTRICIAN TRADE  
CURRICULUM GUIDE**

UPON SUCCESSFUL COMPLETION OF THIS PROGRAM THE APPRENTICE SHOULD BE ABLE TO PERFORM THE FOLLOWING OUTCOMES AND OBJECTIVES.

**SECTION ONE:..... ALTERNATING CURRENT (ac) CIRCUIT PROPERTIES..... 15%**

**A. Second Period Math Applications ..... 16%**

**Outcome: Perform second period math calculations.**

1. Perform arithmetic operations in sequence using BEDMAS.
2. Transpose equations to make any stated term the subject.
3. Perform arithmetic operations using squares and square roots.
4. Perform calculations using scientific notation.
5. Perform calculations involving SI prefixes.
6. Perform calculations using Pythagorean Theorem.
7. Perform calculations using trigonometric functions.
8. Perform calculations involving the addition of phasors.
9. Perform calculations using ratio and proportion.

**B. Fundamentals of Alternating Current.....17%**

**Outcome: Describe the fundamentals of alternating current (ac).**

1. Describe the generation of an ac sine wave.
2. Determine the output frequency of an ac generator.
3. Calculate standard ac sine wave values.
4. Describe the relationship between sine waves and phasor diagrams.
5. Describe the factors affecting impedance in an ac circuit.

**C. Principles of ac Circuits ..... 16%**

**Outcome: State and analyze the characteristics of ac circuits.**

1. Describe the three circuit properties: resistance, inductance and capacitance, with respect to their current limiting effects.
2. Describe the effects of ac on the resistance of a circuit.

**D. Inductance and Inductive Reactance ..... 17%**

**Outcome: Connect and analyze inductors in circuits.**

1. Describe an inductor (coil) and its characteristics.
2. Describe inductance and the factors which affect it.
3. Describe induction and its effects.
4. Describe the effects of an inductor in a dc circuit.
5. Describe the effects of an inductor in an ac circuit.



6. Describe the characteristics of an ac inductive circuit.
7. Describe the power relationships in an inductive circuit.
8. Connect and analyze ac circuits containing inductance.

**E. Capacitance and Capacitive Reactance..... 17%**

**Outcome: Connect and analyze capacitors in circuits.**

1. Describe capacitor construction, types and applications.
2. Describe capacitance and factors that affect it.
3. Describe the effects of a capacitor in a dc circuit.
4. Describe capacitive reactance.
5. Describe the characteristics and effects of an ac capacitive circuit.
6. Describe the power relationships in a capacitive circuit.
7. Connect and analyze ac capacitive circuits.
8. Connect and analyze dc capacitive circuits.

**F. Power Relationships ..... 17%**

**Outcome: Calculate power, reactive power and apparent power in ac circuits.**

1. Compare reactive power due to inductance and capacitance.
2. Determine the power, apparent power, reactive power and power factor angle in an ac circuit.
3. Connect and analyze reactive power in an ac circuit.

**SECTION TWO:.....RLC CIRCUITS..... 31%**

**A. Series ac Circuits ..... 14%**

**Outcome: Connect and analyze ac series circuit containing resistors, inductors or capacitors.**

1. Analyze an ac circuit containing resistors connected in series.
2. Analyze an ac circuit containing inductors connected in series.
3. Analyze an ac circuit containing capacitors connected in series.
4. Connect and analyze ac circuits containing resistors, inductors or capacitors.

**B. Series Resistive-Reactive Circuits ..... 16%**

**Outcome: Connect and analyze ac series circuits that contain resistors and inductors and circuits that contain resistors and capacitors.**

1. Analyze a circuit containing a resistor and an inductor connected in series.
2. Solve problems involving a resistor and an inductor connected in series.
3. Analyze a circuit containing a resistor and a capacitor connected in series.
4. Solve problems involving a resistor and a capacitor connected in series.
5. Connect and analyze circuits containing a resistor and inductor.
6. Connect and analyze circuits containing a resistor and capacitor.

**C. Series RLC Circuits..... 19%**

**Outcome:** *Connect and analyze ac series circuits that contain resistors, inductors and capacitors.*

1. Explain the characteristics and applications of a series RLC circuits.
2. Analyze a circuit containing resistance, inductive reactance and capacitive reactance.
3. Solve problems involving a resistor, a coil and a capacitor connected in series.
4. Connect and analyze ac circuits that contain resistors, inductors and capacitors.

**D. Introduction to Parallel ac Circuits..... 13%**

**Outcome:** *Analyze parallel ac circuits containing resistors, inductors or capacitors.*

1. Analyze an ac circuit containing resistors connected in parallel.
2. Analyze an ac circuit containing inductors connected in parallel.
3. Analyze an ac circuit containing capacitors connected in parallel.

**E. Parallel RLC Circuits..... 19%**

**Outcome:** *Connect and analyze ac parallel circuits containing resistors, inductors and capacitors.*

1. Analyze a circuit containing resistance, inductive reactance and capacitive reactance connected in parallel.
2. Solve problems involving a heater connected in parallel with a motor.
3. Solve problems involving motors connected in parallel.
4. Connect and analyze ac parallel circuits containing resistors, inductors and capacitors.

**F. Power Factor Correction Single-Phase..... 19%**

**Outcome:** *Connect and analyze single phase power factor correction circuits.*

1. Analyze a circuit that has a capacitive load in parallel with a motor.
2. Describe the reasons and methods of maintaining a high power factor in an electrical plant.
3. Calculate the kvar rating of a capacitor bank to correct the circuit power factor using the power method.
4. Calculate the kvar rating of a capacitor bank to correct the circuit power factor using the current method.
5. Connect and analyze single phase power factor correction circuits.

**SECTION THREE: .....HEATING AND COOLING SYSTEMS ..... 17%**

**A. Principles of Automatic Heating and Cooling Controls ..... 19%**

**Outcome:** *State the principles of automatic controls for heating and cooling systems.*

1. State the requirements of a basic heating and cooling system.
2. Describe the basic components of a forced-air heating system.
3. Interpret electrical diagrams of heating or cooling control systems.
4. State the code requirements relating to the electrical installation of heating and cooling systems.

**B. Temperature Sensing and Control Devices..... 10%**

**Outcome:** *State the principles of operation for temperature sensing and control devices.*

1. Describe the operating characteristics of various temperature-sensing devices.
2. Describe the use and application of various temperature-sensing devices used in heating and cooling systems.
3. Describe how thermostats are used in heating and cooling systems.

**C. Basic Gas-Fired Forced-Air Heating Systems ..... 14%**

**Outcome:** *Connect and troubleshoot control circuits in a gas-fired, forced-air heating system.*

1. Describe the components used in a basic gas-fired, forced-air heating system.
2. Describe the purpose and application of a thermocouple.
3. Describe the operation of a domestic heating system using a 24 V control circuit.
4. Describe the operation of a unit heater using a 120 V control circuit.
5. Describe the installation and operation of a fan interlock system on a residential forced air heating system.
6. Connect and analyze a 24V control heating system.
7. Connect and analyze thermocouple operation including open and closed circuit tests.

**D. Efficient Gas-Fired Forced-Air Heating Systems ..... 19%**

**Outcome:** *Connect and troubleshoot control circuits in an efficient gas-fired, forced-air heating system.*

1. Describe the components that make up an efficient, gas-fired, forced-air heating system.
2. Describe the operation of an efficient, gas-fired, forced-air heating system.
3. Describe the purpose and application of auxiliary equipment used with gas-fired, forced-air heating systems.
4. Connect and troubleshoot control circuits in an efficient gas-fired, forced-air heating system.

**E. Basic Hot Water Heating Systems..... 9%**

**Outcome:** *Connect and troubleshoot control circuits in a hot water heating system.*

1. Describe the operation of a basic hot water heating system.
2. Identify the purpose and application of the components of a hot water heating system.
3. Connect and troubleshoot the operation of a hot water heating system.

**F. Cooling Systems ..... 14%**

**Outcome:** *Connect and troubleshoot control circuits in a heating and cooling system.*

1. Describe the components used in a typical cooling system.
2. Describe the operation of a typical cooling system.
3. Describe the requirements for combining a basic cooling system with an existing forced-air heating system.
4. Connect and troubleshoot the operation of a combined heating and cooling system.

**G. HVAC Rooftop Units ..... 10%**

**Outcome:** *Connect and troubleshoot control circuits in a commercial HVAC unit.*

1. Describe the components of a typical HVAC unit.
2. Describe the operation of a typical HVAC unit.
3. Determine the thermostats used in different applications.
4. Describe procedures for troubleshooting a rooftop HVAC unit.
5. Connect and troubleshoot the operation of a roof top HVAC unit.

**H. Heat Trace ..... 5%**

**Outcome:** *Describe the components and characteristics of heat trace systems.*

1. Describe the types of heat trace systems.
2. Describe the controls a heat trace system.
3. Describe the installation of heat trace systems.

**SECTION FOUR: ..... MAGNETIC CONTROL AND SWITCHING CIRCUITS ..... 18%**

**A. Electrical Control Drawings ..... 5%**

**Outcome:** *Interpret electrical control drawings.*

1. Identify the four basic types of electrical control drawings.
2. Identify the symbols used on schematic drawings.
3. Describe the sequence of operation of a control circuit by reading the schematic diagram.

**B. Relays and Contactors ..... 14%**

**Outcome:** *Connect and analyze relays and contactors.*

1. Describe different types of relays and contactors.
2. Interpret nameplate information.
3. Identify the three main parts of a relay.
4. Describe the purpose of laminations and shading coils in relays and contactors.
5. Identify the applications, advantages and disadvantages of typical materials used for constructing contacts.
6. Identify the advantages and disadvantages of contact configurations.
7. Describe the operation of relay and contactors.
8. Connect and analyze relay and contactor operation.

**C. Timers and Smart Relays ..... 10%**

**Outcome:** *Connect and analyze timers and smart relays.*

1. Describe timers and basic timing functions.
2. Describe smart relays and basic timing functions.
3. Connect and analyze timers and smart relays.

**D. Protection Devices ..... 10%**

**Outcome:** *Select control and protective devices for a motor branch circuit.*

1. Describe overcurrent and overload protection devices.
2. Describe the protection characteristics of fuses and breakers.
3. Identify the factors that determine short circuit currents.
4. Describe the basic disconnection and control requirements for a motor branch circuit.
5. Describe overcurrent and overload protection requirements for a motor branch circuit.
6. Determine the required ampere rating of control and protective devices in a motor branch circuit.

**E. Motor Starters ..... 17%**

**Outcome:** *Identify the components and applications of magnetic motor starters and overload protection devices.*

1. Describe the parts of a magnetic motor starter.
2. Describe the criteria for determining the suitability of a starter for a specific application.
3. Interpret the ohmmeter readings that determine the operational condition of a starter.
4. State the reasons for providing overload devices for motors.
5. List three conditions that could cause the single-phasing of a three-phase motor.
6. State the requirements of CEC rules regarding motor overload devices.
7. Describe the operation and types of overload devices used for motor overload protection.

**F. Diagram Conversion ..... 14%**

**Outcome:** *Convert between wiring and schematic diagrams for magnetic controls and switching circuits.*

1. Describe a method by which a wiring diagram may be converted to a schematic diagram.
2. Explain how the electrical sequence of components in a drawing affects the number of conductors in a conduit.

**G. Single Motor Control / Pilot Devices and Symbols ..... 16%**

**Outcome:** *Connect and analyze motor control circuits.*

1. Identify the three sections of a basic stop/start control circuit.
2. Describe the operation of a control circuit when interlock contacts are placed in each of the three sections.
3. Identify the type of pushbuttons (NO or NC) used for stopping and starting and how they would be connected for multiple station operation.
4. Determine the purpose and connection of indicating lights in a motor control circuit.
5. Differentiate between low voltage release and low voltage protection with practical applications for each of the two types of control circuits.
6. Determine the cause of a malfunction in a motor control circuit.
7. Describe the difference between maintained and momentary types of pilot devices and list examples.

8. Describe the basic operation of automatic pilot devices with examples.
9. Connect and demonstrate the operation of the following single motor controllers with indicating lights and other pilot devices: single station 2-wire control; single station 3-wire control; multiple stop/start stations.

**H. Reversing Motor Starters ..... 14%**

**Outcome:** *Connect and analyze NEMA and IEC reversing motor starters.*

1. Describe the operation of a reversing magnetic motor starter.
2. State the purpose of the mechanical interlocks on a reversing motor magnetic starter.
3. State the purpose of the electrical interlocks on a reversing motor magnetic starter.
4. Identify the seven sections of the control circuit, with terminal numbers that can be used for the placement of interlock contacts.
5. Connect and analyze the operation of the following forward/reversing motor control circuits: single station; push button interlock and limit switches.

**SECTION FIVE: ..... CANADIAN ELECTRICAL CODE – PART 1 / PLANS AND DIAGRAMS ..... 19%**

**A. Service Conductor Ampacity for a Single Dwelling ..... 9%**

**Outcome:** *Determine the minimum ampacity of conductors to single dwellings.*

1. Define the specific terms from Section 8 that apply to the second period code program.
2. Determine the calculated current for the service conductors supplying a single dwelling.
3. Determine the minimum ampacity for the service conductors supplying a single dwelling.
4. Determine the minimum AWG size of conductors and the trade size of conduit required for the service conductors supplying a single dwelling.

**B. Services and Service Equipment for a Single Dwelling ..... 11%**

**Outcome:** *Determine the requirements of a service for a single dwelling.*

1. Define the terms from Section 6 that apply to the second period code program.
2. Determine the requirements for metering equipment for a single dwelling.
3. Determine the requirements for service protection and control equipment for a single dwelling.
4. Determine the requirements for overhead service equipment and conductors.
5. Determine the requirements for underground service equipment and conductors.

**C. Feeder and Branch Distribution Requirements for a Single Dwelling ..... 6%**

**Outcome:** *Determine the branch circuit and feeder requirements for a single dwelling.*

1. Determine the requirements for a single dwelling panelboard.
2. Determine the requirements for typical single dwelling branch circuit conductors and overcurrent devices.

**D. Grounding Requirements for a Single Dwelling ..... 8%**

**Outcome:** *Determine the grounding and bonding requirements for a single dwelling.*

1. Define the terms from Section 10 applicable to second period code.
2. Determine the requirements for grounding and bonding in a single dwelling.

**E. Service Ampacity for Apartments and Similar Buildings ..... 17%**

**Outcome:** *Determine the service, feeder and branch circuit requirements of an apartment building.*

1. Calculate the minimum ampacity required for a feeder conductor to a dwelling unit in an apartment complex.
2. Determine the demand load on a public panelboard feeder conductor in an apartment complex.
3. Determine the demand load on a parking lot panelboard feeder conductor.
4. Calculate the minimum ampacity required for the main service conductors in an apartment complex.
5. Determine the required size of a raceway when conductors of different sizes are installed.

**F. Service Protection and Control for Apartments and Similar Buildings ..... 9%**

**Outcome:** *Determine the requirements for equipment protection, control, grounding and bonding for apartments and similar buildings.*

1. Determine the requirements for service protection and control equipment for apartments and similar buildings.
2. Determine the requirements for grounding and bonding of apartments and similar buildings.

**G. Capacitor Bank Installations ..... 4%**

**Outcome:** *Determine wiring and equipment requirements for capacitor bank installations.*

1. Determine the conductor sizes for capacitor installations.
2. Determine the rating of the overcurrent protection required for capacitor installations.
3. Determine the requirements for capacitor discharge circuits.
4. Determine the location and current rating of capacitor disconnecting means.

**H. Pools, Mobile Home and Temporary Wiring – Sections 68, 72 and 76 ..... 9%**

**Outcome:** *Determine the code requirements for sections 68, 72, and 76.*

1. Determine the regulations for electric installations for pools, tubs and spas.
2. Determine the regulations for services and distribution facilities of mobile homes and recreational vehicle parks.
3. Determine the regulations for temporary wiring installations.

**I. Diagrams ..... 9%**

**Outcome:** *Interpret electrical drawings and schematic diagrams.*

1. Identify terms and symbols that are commonly used in electrical drawings.
2. Interpret electrical drawings.
3. Describe the sequence of operation using a schematic diagram.

**J. Specifications ..... 9%**

**Outcome:**     ***Apply specifications to electrical installations.***

1.     State the purpose of specifications.
2.     Describe the organization of specifications.
3.     Extract specific information from specifications.

**K. Drawings and Plans ..... 9%**

**Outcome:**     ***Interpret commercial electrical construction drawings.***

1.     Identify the divisions of drawings and their applications.
2.     Identify the different views and schedules that are typically found in drawings.
3.     Extract information from a set of drawings.



**THIRD PERIOD TECHNICAL TRAINING  
ELECTRICIAN TRADE  
CURRICULUM GUIDE**

UPON SUCCESSFUL COMPLETION OF THIS PROGRAM THE APPRENTICE SHOULD BE ABLE TO PERFORM THE FOLLOWING OUTCOMES AND OBJECTIVES.

**SECTION ONE:..... THREE-PHASE PRINCIPLES ..... 41%**

**A. Third Period Math Applications ..... 12%**

**Outcome: Perform third period math calculations.**

1. Apply Kirchoff's Laws to solve combination circuits.
2. Apply Pythagorean Theorem to solve RLC circuits.
3. Apply trigonometric functions to solve RLC circuits.
4. Perform calculations involving the addition of phasors.
5. Apply ratio and proportion to solve transformer problems.

**B. Three-Phase Systems ..... 4%**

**Outcome: State the characteristics of a three-phase electrical system.**

1. Explain the difference between single-phase power and three-phase power.
2. Explain the generation of the phase voltages of a three-phase system.
3. Explain the phase sequence of three-phase sine waves.
4. State three main advantages of three-phase power over single-phase power.

**C. Three-Phase Wye Connection ..... 29%**

**Outcome: Connect and analyze three-phase wye systems.**

1. State the relationship between phase voltage and line voltage for a wye system.
2. State the relationship between phase current and line current for a wye system.
3. Explain the importance of a neutral conductor on an unbalanced wye system.
4. Draw a complete phasor diagram of a balanced wye-connected circuit.
5. Draw a phasor diagram of a wye circuit with an unbalanced load.
6. Perform calculations for a wye-connected circuit.
7. Connect and analyze three-phase wye circuits.

**D. Three-Phase Delta Connection ..... 29%**

**Outcome: Connect and analyze three-phase delta systems.**

1. State the relationship between phase voltage and line voltage for a delta system.
2. State the relationship between phase current and line current for a delta system.
3. Draw a complete phasor diagram of a balanced delta connected circuit.
4. Draw a phasor diagram of a delta circuit with an unbalanced load.
5. Perform calculations for a delta connected circuit.

- 6. Connect and analyze three-phase four wire delta circuits.
- 7. Connect and analyze three-phase delta circuits.

**E. Three-Phase Delta Wye Connection..... 8%**

**Outcome: Connect and analyze three-phase delta wye systems.**

- 1. Perform calculations for a delta wye-connected circuit.
- 2. Connect and analyze three-phase delta wye circuits.
- 3. Connect and analyze three-phase combined delta wye circuits.

**F. Three-Phase Power Calculations ..... 6%**

**Outcome: Calculate the power components of three-phase systems.**

- 1. State the mathematical equations for all power components in a balanced three-phase system.
- 2. State the mathematical equations for all power components in an unbalanced three-phase system.
- 3. Calculate the three-phase power components in a balanced three-phase system.
- 4. Calculate the three-phase power components in an unbalanced three-phase system.

**G. Three-Phase Measurement for Power Calculations ..... 4%**

**Outcome: Measure and calculate balanced and unbalanced three-phase loads.**

- 1. Identify the connections for a power quality analyzer in a three-phase circuit.
- 2. Draw a phasor diagram to determine the power ratings in a three-phase circuit.
- 3. Perform power calculations for a three-phase circuit.
- 4. Connect and analyze a three-phase circuit using a power quality analyzer.

**H. Three-Phase Power Factor Correction..... 8%**

**Outcome: Connect and analyze circuits relating to power factor correction.**

- 1. Define power factor as it applies to a three-phase system.
- 2. Explain how capacitors will correct the power factor of a circuit.
- 3. Determine how capacitors should be connected to a three-phase system for power factor correction.
- 4. Perform power factor correction calculations.
- 5. Explain how capacitors can be safely connected to and disconnected from a circuit.
- 6. Connect and analyze power factor correction calculations.

**SECTION TWO:..... THREE-PHASE MOTOR PRINCIPLES ..... 23%**

**A. Introduction to Three-Phase Induction Motors ..... 22%**

**Outcome: State the characteristics of three-phase induction motors.**

- 1. Identify terms related to a three-phase induction motor.
- 2. Describe the construction of a three-phase induction motor.
- 3. Describe the principle of operation of a squirrel cage induction motor.
- 4. Describe information located on a motor nameplate.

**B. Operation of Three-Phase Induction Motors ..... 21%**

**Outcome: Analyze the stator and rotor parameters of three-phase induction motors.**

1. Calculate synchronous speed and percent slip of a three phase induction motor.
2. Analyze the basic rotor parameters and their effect on torque.
3. Analyze the effect of load on stator current, rotor parameters, and percent slip.
4. Describe NEMA rotor designs A, B, C and D and their electrical and mechanical characteristics.
5. Describe the wound rotor motor and its electrical and mechanical characteristics.
6. Calculate horsepower, motor efficiency, and speed regulation.

**C. Three-Phase Motors and Starters ..... 43%**

**Outcome: Connect and analyze the operation of three-phase motors and starters.**

1. Describe the high and low voltage connections of three-phase multi-lead motors.
2. Describe the operation of across the line and reduced voltage three-phase motor starters.
3. Describe the characteristics of rotary and static phase converters.
4. Connect and identify the leads on a nine lead motor.
5. Connect and analyze the operation of across the line “full voltage” three-phase motor starters.
6. Connect and analyze the operation of wye/delta three-phase motor starters.
7. Connect and analyze the operation of auto transformer three-phase motor starters.
8. Connect and analyze the operation of a wound rotor motor.

**D. Introduction to Variable Frequency Drives..... 14%**

**Outcome: Connect and analyze the operation of variable frequency drives.**

1. Describe the applications of variable frequency drives.
2. Describe the considerations for the installation of variable frequency drives.
3. Describe the operation of variable frequency drives.
4. Connect and analyze the operation of a variable frequency drive for various loads.

**SECTION THREE: ..... TRANSFORMERS ..... 14%**

**A. Introduction to Transformers..... 12%**

**Outcome: State the characteristics of single-phase transformers.**

1. Describe induction and mutual induction in a single-phase transformer.
2. Describe the construction and features of a single-phase transformer.
3. Calculate the ratings, ratios and associated values of a single-phase transformer.
4. Describe transformer polarities.
5. State how transformer voltage taps are used.
6. Connect and analyze a multiple winding transformer.

**B. Transformer Operation (Single-Phase Transformers)..... 23%**

**Outcome: Connect and analyze single-phase transformers.**

1. Describe transformer action and calculate percent voltage regulation.
2. Calculate transformer losses.
3. Calculate the efficiency and the available short-circuit current of a transformer.
4. Describe the requirements for paralleling single-phase transformers and associated hazards.
5. Connect and analyze a load test on a transformer.
6. Perform an open-circuit test on a transformer.
7. Perform a short-circuit test on a transformer.
8. Connect and analyze single-phase transformers in parallel.

**C. Autotransformers ..... 6%**

**Outcome: Connect and analyze an autotransformer.**

1. Describe the operation of autotransformers.
2. Perform calculations for an autotransformer.
3. List the advantages and disadvantages of autotransformers.
4. Connect and analyze the operation of an autotransformer.

**D. Transformer Connections (Three-Phase Transformers)..... 41%**

**Outcome: Connect and analyze three-phase transformer connections.**

1. Describe the characteristics of a wye/wye transformer connection.
2. Describe the characteristics of a delta/delta transformer connection.
3. Describe the characteristics of a wye/delta transformer connection.
4. Describe the characteristics of a delta/four-wire delta transformer connection.
5. Describe the characteristics of a delta/wye transformer connection.
6. Describe the characteristics of an open delta/open delta transformer connection.
7. Describe the characteristics of a Neutral Ground Resistor.
8. Connect and analyze three-phase transformers connections.
9. Connect and analyze an open corner secondary test.
10. Connect and analyze Neutral Ground Resistors.

**E. Energy Measurement ..... 18%**

**Outcome: Connect and analyze equipment used for energy measurement.**

1. Describe the connection of self-contained meter sockets.
2. Describe the connection and use of instrument transformers.
3. Describe the connection of voltmeter and ammeter transfer switches.
4. Connect and analyze instrument transformers for energy measurement.

**SECTION FOUR: ..... CANADIAN ELECTRICAL CODE ..... 22%**

**A. Grounding and Bonding – Section 10 ..... 12%**

**Outcome:** *Apply the rules and regulations in the CEC that pertain to bonding and grounding.*

1. Define the terms used for grounding and bonding.
2. State the reasons for grounding and bonding.
3. Apply the appropriate regulations pertaining to grounding and bonding.
4. Determine the required AWG size of conductors for grounding and bonding.

**B. Protection and Control – Section 14 ..... 19%**

**Outcome:** *Determine protection and control device requirements.*

1. Define various terms relating to circuit protection equipment.
2. Describe the construction and operation of various overcurrent devices.
3. Describe the construction and operation of ground fault circuit interrupters and arc fault circuit interrupters.
4. Determine the general requirements pertaining to circuit protective devices.
5. Determine when circuit protection and control devices are required.
6. Describe and compare radial and network distribution systems.
7. Determine the requirements for circuit control devices.
8. Describe co-ordination and series rating of overcurrent devices.

**C. Installation of Equipment - Section 26 ..... 12%**

**Outcome:** *Determine the code requirements for installation of electrical equipment.*

1. Determine the regulations pertaining to liquid-filled electrical equipment.
2. Determine the regulations pertaining to the installation of transformers.
3. Determine the regulations pertaining to the installation of fences guarding electrical equipment and electrical equipment vaults.
4. Determine the regulations pertaining to the installation of switchboards, switchgear and panelboards.
5. Determine the regulations pertaining to the installation of submersible pumps.

**D. Individual Motors ..... 11%**

**Outcome:** *Determine the installation requirements for individual motors.*

1. Define specific terms and the CEC general requirements pertaining to the installation of motors.
2. Interpret the CEC Rules pertaining to wiring methods, control, and disconnecting means for motor circuits.
3. Determine the type and ampacity of conductors for individual motors.
4. Explain how overload devices operate.
5. Determine the maximum ampere rating of overload devices required for motors.
6. Determine the maximum ampere rating for an overcurrent device required for a motor branch circuit.
7. Determine the rating of equipment required to connect an electric motor.

**E. Motor Banks..... 11%**

**Outcome: Determine the installation requirements for motor banks.**

1. Determine the required ampacity of feeder conductors for a group of motors.
2. Determine the maximum allowable ampacity of an overcurrent device for a group of motors.
3. Determine the rating of equipment to connect a group of motors.

**F. Hazardous Locations – Section 18..... 23%**

**Outcome: Determine the classification of hazardous locations.**

1. Define the specific terms that apply to hazardous locations.
2. Interpret the general section rules regarding installation in hazardous locations.
3. Determine the requirements of an electrical installation in a Zone 0 location.
4. Determine the requirements of an electrical installation in a Zone 1 location.
5. Determine the requirements of an electrical installation in a Zone 2 location.
6. Determine the requirements of an electrical installation in a Zone 20 location.
7. Determine the requirements of an electrical installation in a Zone 21 location.
8. Determine the requirements of an electrical installation in a Zone 22 location.

**G. Class I Locations – Section 20..... 8%**

**Outcome: Determine the code requirements for section 20.**

1. Define the specific terms that apply to Section 20.
2. Determine the requirements for installations in dispensing or refuelling stations for gasoline, propane and natural gas.
3. Determine the requirements for installations in commercial garages.
4. Determine the requirements for installations in residential storage garages.
5. Determine the requirements for installations in bulk storage plants.
6. Determine the requirements for installations in finishing process areas.
7. Determine the requirements for installations in aircraft hangars.

**H. Corrosive and Wet Locations – Section 22 ..... 4%**

**Outcome: Determine the installation requirements for Category 1 and 2 locations.**

1. Define the specific terms that apply to Section 22.
2. Determine the requirements for electrical equipment in a Category 1 and Category 2 location.
3. Determine the requirements for electrical wiring in a Category 1 and Category 2 location.

**FOURTH PERIOD TECHNICAL TRAINING  
ELECTRICIAN TRADE  
CURRICULUM GUIDE**

**SECTION ONE:.....MACHINES ..... 17%**

**A. Fourth Period Math Applications..... 22%**

**Outcome:     *Perform fourth period math calculations.***

1.     Apply Kirchoff's Laws to solve combination circuits.
2.     Solve series and parallel RLC circuits.
3.     Perform calculations for wye connected circuits.
4.     Perform calculations for delta connected circuits.

**B. Alternators and Generators ..... 13%**

**Outcome:     *State the characteristics of alternators and generators.***

1.     Define general terms used to describe ac and dc machines.
2.     State the basic principles of operation of alternators and generators.
3.     Describe specific machine nameplate information.

**C. Direct Current (dc) Machines ..... 16%**

**Outcome:     *Connect and analyze dc machines.***

1.     Describe the operation and principles of a dc generator.
2.     Describe the operation and principles of a dc motor.
3.     Describe the applications and benefits of a dc motor.
4.     Connect and analyze a dc motor.

**D. Alternators ..... 26%**

**Outcome:     *Connect and analyze alternators.***

1.     Describe the operation and principles of an alternator.
2.     Describe how to synchronize and parallel alternators.
3.     Describe the operation of a voltage regulator.
4.     Describe the method of shifting or sharing load between alternators.
5.     Connect and analyze three-phase alternators.
6.     Connect and analyze the operation of an automatic voltage regulator.
7.     Connect and analyze parallel operation of three-phase alternators.

**E. Synchronous Motors ..... 13%**

**Outcome:     *Connect and analyze synchronous motors.***

1.     Describe the applications of synchronous motors.

2. Compare a synchronous motor to a squirrel cage induction motor.
3. Describe the operation and principles of a synchronous motor.
4. Describe the relationship between excitation and load.
5. Connect and analyze a synchronous motor.

**F. Single-Phase Motors..... 10%**

**Outcome: Connect and analyze single phase motors.**

1. Describe the components, principles of operation and applications of a resistance split-phase motor.
2. Describe the components, principle of operation and applications of a two-value capacitor motor.
3. Connect and analyze a dual voltage motor and reverse it.

**SECTION TWO:..... CONTROL AND SWITCHING / PLC ..... 21%**

**A. Drawing and Basic Circuits..... 11%**

**Outcome: Interpret a motor control circuit.**

1. Identify symbols used in electrical drawings.
2. State the purpose of the four types of electrical drawings.
3. Demonstrate the ability to interpret schematic diagrams to understand how basic stop/start control and electrical interlock circuits operate in a motor-control circuit.

**B. Diagram Conversion ..... 11%**

**Outcome: Convert between wiring and schematic diagrams.**

1. Convert wiring diagrams to schematic diagrams.
2. Convert schematic diagrams to wiring diagrams.
3. Determine how the sequence of component connections can affect the wiring installation.

**C. Controls and Switching Circuits..... 24%**

**Outcome: Design and connect controls and switching circuits.**

1. State the sections involved in the forward/reverse stop control of three-phase motors.
2. Design jogging and inching circuits.
3. Develop schematic diagrams for control circuits.
4. Connect and analyze three-phase reversing controller magnetic starter.
5. Connect and analyze three-phase reversing controller with direct direction switch.
6. Connect and analyze three-phase controller with jogging circuit with three button control.
7. Connect and analyze three-phase controller with jogging circuit using selector switch.
8. Connect and analyze three-phase controller with jogging circuit using control relay.
9. Connect and analyze three-phase controller reversing using jogging.
10. Connect and analyze three-phase controller with hand / off / auto selector switch.
11. Connect and analyze three-phase reversing controller with limit switches.
12. Connect and analyze three-phase motor control using float switches and pressure switches.



13. Connect and analyze three-phase motor control using time delay.

**D. Special Control Circuits..... 14%**

**Outcome: Connect and analyze special control circuits.**

1. Describe timers and basic timing functions.
2. Explain the operation and application of motor braking.
3. Describe plugging and anti-plugging as it applies to electric motors.
4. Describe installation requirements for a control transformer.

**E. Programmable Logic Controllers ..... 40%**

**Outcome: Program, connect and analyze a PLC.**

1. Describe the function of programmable logic controllers.
2. Describe PLC hardware components.
3. Describe discrete and analog circuits.
4. Describe five types of PLC programming languages.
5. Program, connect and analyze discrete circuits.
6. Program, connect and analyze analog circuits.

**SECTION THREE:...FIRE ALARM SYSTEMS & RED SEAL PROGRAM & INDUSTRY NETWORK..... 12%**

**A. Fire Detection and Alarm Systems ..... 17%**

**Outcome: Describe the general principles and components of a fire alarm system.**

1. Explain the general principles of addressable and non-addressable fire detection alarm systems.
2. Describe active and conventional detection devices.
3. Describe signalling devices.
4. Describe ancillary equipment.
5. Explain the operation of a smoke alarm.

**B. Fire Detection and Alarm System Regulations ..... 17%**

**Outcome: Identify and describe fire detection and alarm system regulations.**

1. Describe the areas of jurisdiction of the governing authorities for fire system codes and standards.
2. Identify the requirements for the installation, verification, audit and maintenance of a fire alarm system.

**C. Fire Alarm System Occupancy Classifications..... 14%**

**Outcome: Determine the criteria for the installation of a fire alarm system and for the location of its components.**

1. Determine when a fire alarm system is required for a specific occupancy.
2. Determine the type and location of fire alarm components for a specific occupancy.

**D. Wiring Procedures for Fire Alarm Systems..... 28%**

**Outcome: Connect and troubleshoot fire alarm systems.**

1. Determine fire alarm system wiring methods and restrictions as contained in the Canadian Electrical Code.
2. Determine power and emergency power supply requirements for fire alarm systems.
3. Create fire alarm circuits.
4. Determine the number of conductors required in a cable or conduit run at any given location within a fire alarm system.
5. Connect and troubleshoot single stage non-addressable fire alarm systems.
6. Connect and troubleshoot single stage addressable fire alarm systems.
7. Connect and troubleshoot two stage addressable fire alarm systems.

**E. Arc Flash and Electrical Safety..... 14%**

**Outcome: Recognize arc flash hazards in electrical installations.**

1. Identify the hazards associated with arc flash.
2. Describe the requirements of Z462, with emphasis on tables 4A and 5.
3. Describe the personal protective equipment related to arc flash.
4. Describe lockout procedures related to energized systems.

**F. Interprovincial Standards Red Seal Program..... 5%**

**Outcome: Use Red Seal products to challenge an Interprovincial examination.**

1. Identify Red Seal products used to develop Interprovincial examinations.
2. Use Red Seal products to prepare for an Interprovincial examination.

**G. Workplace Coaching Skills ..... 5%**

**Outcome: Use coaching skills when training apprentices.**

1. Describe the process for coaching an apprentice.

**SECTION FOUR: ..... APPLICATIONS OF ELECTRONICS..... 19%**

**A. Rectifiers and Battery Chargers ..... 29%**

**Outcome: Connect and analyze rectifiers and battery chargers.**

1. Describe the different ways of defining voltage and current values.
2. Describe the electrical properties and ratings of resistors, capacitors and inductors.
3. Describe the applications of meters to measure the electrical characteristics of components and circuits.
4. Describe the operating characteristics of diodes and typical applications of diodes (fire bell).
5. Describe the principles of operation of single-phase rectifiers.
6. Describe the principles of operation of three-phase rectifiers.
7. Describe the operation of a single-phase battery charger.
8. Connect and analyze the diodes as used in rectifier circuits.

9. Troubleshoot the rectifier stage of a battery charger.

**B. Welders and Filters ..... 14%**

**Outcome:** *Connect and analyze welders and filters.*

1. Describe the effects of adding filters to a rectifier circuit.
2. Describe the operation of a welder.
3. Connect and analyze the effects of adding filters to a rectifier circuit.
4. Troubleshoot the rectifier stage of a welder.

**C. Controlled Rectifiers ..... 14%**

**Outcome:** *Connect and analyze controlled rectifiers.*

1. Describe the principal of operation and application of Silicone Controlled Rectifier (SCR).
2. Describe the principal of operation and application of SCR triggering circuit.
3. Describe the operation of an SCR in a smoke detector application.
4. Describe the principal of operation and application of a Triac.
5. Connect and analyze an SCR to control a dc motor from a single-phase-supply.
6. Connect and analyze an SCR to control a dc motor from a three-phase-supply.
7. Connect and analyze a voltage regulator.
8. Connect and analyze a circuit using a Triac to control a resistive lighting load.
9. Connect and analyze a circuit using a Triac to control motor circuits.

**D. Uninterruptible Power Supply System..... 14%**

**Outcome:** *Connect and analyze an uninterruptible power supply (UPS) system.*

1. Describe the principles of operation and applications of a UPS system.
2. Describe the operation of an inverter circuit.
3. Describe the installation of a UPS system.
4. Connect and analyze a UPS system.

**E. Variable Frequency Drives ..... 14%**

**Outcome:** *Program, connect and analyze variable frequency drives.*

1. Describe the motor requirements for variable frequency drive (VFD) applications.
2. Describe the principles of operation and application of a VFD.
3. Describe the major components of a VFD.
4. Describe the principles of open-loop, closed-loop, and braking.
5. Program, connect and analyze a VFD.

**F. Cathodic Protection ..... 3%**

**Outcome:** *State the characteristics of a cathodic protection system.*

1. Describe the principles of operation and applications of a cathodic protection system.
2. Describe the operation of a rectifier circuit in a cathodic protection system.
3. Describe the installation of a cathodic protection system and code requirements.

**G. Renewable Energy Systems ..... 12%****Outcome: Determine the installation requirements for electric renewable energy systems.**

1. Describe alternate methods of power generation.
2. Describe the major components, characteristics and operation of a wind generation system.
3. Describe the major components, characteristics and operation of a photovoltaic (PV) system.
4. Calculate the panel board requirements for renewable energy systems.
5. Describe "Anti-islanding".

**SECTION FIVE: .. CANADIAN ELECTRICAL CODE PART 1 / APPLICATIONS AND SAFETY ..... 31%****A. Conductors – Section 4 ..... 7%****Outcome: Determine the size of conductors and conduit.**

1. Determine the allowable ampacity and AWG size of circuit conductors.
2. Determine the allowable ampacity and AWG size of neutral conductors.
3. Determine the minimum size of single conductor metal-sheathed cables.
4. Apply the CEC Rules for voltage drop.

**B. Grounding and Bonding and Distribution Layout – Section 10 ..... 5%****Outcome: Apply the grounding and bonding requirements for electrical installations.**

1. Apply the CEC regulations with respect to system and circuit grounding and bonding.
2. Apply the CEC regulations with respect to equipment bonding.
3. Determine the bonding and grounding requirements for an electrical distribution centre.

**C. Wiring Methods – Section 12 ..... 13%****Outcome: Apply the rules for installation of cables, raceways and enclosures.**

1. Determine the requirements for installation and selection of raceway materials.
2. Determine the requirements for installation of cables.
3. Determine the requirements for single conductors in raceways.
4. Determine the minimum dimensions and volume of pull boxes, junction boxes and outlet boxes.
5. Determine all requirements to allow for conduit expansion including joining of dissimilar materials.
6. Apply the requirements of Section 12 for an electrical distribution centre.

**D. Protection and Control – Section 14 ..... 11%****Outcome: Determine protection and control device requirements for electrical installations.**

1. Determine the locations in a circuit where overcurrent devices are required.
2. Determine when ground fault protection for equipment is required.
3. Determine the type and rating of overcurrent devices.
4. Describe control devices required for conductors and equipment.

**E. Lighting, Emergency Systems and Unit Equipment – Sections 30 and 46 ..... 9%****Outcome: Determine the installation requirements for lighting, emergency systems and unit equipment.**

1. Define specific terms that are used in the lighting industry.
2. Describe the different types, components, and characteristics of electric lighting sources and luminaire.
3. Describe lamp installation and maintenance requirements.
4. Determine the installation requirements for lighting equipment.
5. Determine the installation requirements for electric discharge lighting.
6. Determine the installation requirements for permanent outdoor lighting.
7. Determine the requirements for the installation of emergency systems and unit equipment.

**F. Communication Systems and Cabling – Section 54, 56 and 60 ..... 3%****Outcome: Determine the installation requirements for communication systems.**

1. Describe network cable types and characteristics.
2. Describe typical network cabling system topographies and characteristics.
3. Describe installation requirements for copper network cabling.
4. Describe installation requirements for optical fibre cabling.
5. Explain procedures for testing and troubleshooting network cabling installations.

**G. Electrical Requirements for a Single Dwelling – Section 8 ..... 4%****Outcome: Determine the electrical requirements for single dwelling feeder and branch circuits.**

1. Determine the minimum allowable ampacity and size of service or feeder conductors supplying a single dwelling.
2. Determine the minimum number of branch circuit positions for a panelboard.
3. Determine the minimum allowable ampacity of branch circuit conductors and the ampere ratings of overcurrent devices for circuits in a single dwelling.
4. Determine the minimum number and location of electrical outlets in a single dwelling.
5. Determine where ground fault and arc fault circuit interrupters are required in a single dwelling.

**H. Electrical Requirements for Apartments – Section 8 ..... 5%****Outcome: Determine the installation requirements for equipment within apartments.**

1. Calculate the minimum allowable ampacity for feeders to individual dwellings of an apartment complex.
2. Determine the demand load on a feeder for a panelboard supplying loads not located in dwelling units.
3. Determine the demand load on a parking lot panelboard feeder.
4. Calculate the minimum allowable ampacity for the main service to an apartment complex.
5. Determine the size of conduit required when dealing with conductors of different AWG sizes.
6. Determine the requirements for service equipment grounding and bonding.

**I. Individual Motors and Motor Banks - Section 28 ..... 5%****Outcome: Determine the installation requirements for motors.**

1. Describe the CEC general requirements for the installation of a motor.
2. Determine the type, minimum allowable ampacity and AWG size for motor conductors.
3. Determine the rating of overcurrent and overload devices required for a motor branch circuit.
4. Determine the minimum allowable ampacity and AWG size of feeder conductors required for a group of motors.
5. Determine the minimum ampacity of the feeder overcurrent device required for a group of motors.
6. Apply the CEC regulations to connect a group of motors.

**J. Installation of Capacitors and Transformers – Section 26 ..... 5%****Outcome: Determine the installation requirements for capacitors and transformers.**

1. Select appropriate locations for liquid-filled capacitors and transformers according to CEC rules.
2. Calculate the kvar rating of capacitors required to improve the power factor of an inductive load.
3. Calculate the rating or setting of the motor overload device in circuits where power factor correction capacitors are used on the load side of a motor controller.
4. Determine the minimum allowable ampacity of conductors, the rating of disconnect switches and the maximum rating of overcurrent devices for capacitor circuits.
5. Determine the minimum allowable conductor ampacity and the maximum rating of overcurrent devices for transformers.

**K. Electric Welders – Section 42 ..... 2%****Outcome: Determine the installation requirements for electric welder.**

1. Determine the minimum allowable ampacity of conductors, the maximum rating of overcurrent devices and the rating of the disconnect means for a transformer arc welder.
2. Determine the minimum allowable ampacity of conductors, the maximum rating of overcurrent devices, and the rating of the disconnect means for an electric resistance welder.

**L. Hazardous and Special Locations – Section 18, 20, & 22 ..... 11%****Outcome: Determine the installation requirements for hazardous and special locations.**

1. Describe the hazardous locations and classifications in Section 18.
2. Identify the equipment and wiring methods required for each of the hazardous location classifications.
3. Identify the hazardous locations as outlined in Section 20 and the requirements for electrical installations in each area.
4. Identify the areas as outlined in Section 22 and the requirements for electrical installations in each area.

**M. Electrical Installations in Patient Care Areas – Section 24 ..... 2%****Outcome: Determine the installation requirements for patient care facilities.**

1. Define the specific terms from Section 24 that apply to patient care facilities.

2. Determine the requirements for wiring and equipment in patient care areas.
3. Determine the requirements for isolated systems in patient care areas.
4. Determine the requirements for essential electrical systems in patient care areas.

**N. High-Voltage – Section 36 ..... 9%**

**Outcome: Determine the requirements for high-voltage installations.**

1. Describe hazards related to high-voltage installations.
2. Identify the components of high-voltage cable and state the purpose of each.
3. Describe the theory of electrical stress control for high-voltage cables.
4. Describe how high-voltage cables are spliced and terminated.
5. Describe the CEC requirements for high voltage installations.

**O. Occupational Applications ..... 9%**

**Outcome: Determine the installation requirement for various electrical applications.**

1. Determine the installation requirements for motor applications.
2. Determine the installation requirements for branch circuit applications.
3. Determine the installation requirements for service applications.
4. Determine the installation requirements for conductor applications.
5. Determine the installation requirements for network cabling applications.
6. Interpret control schematics.



# **Apprenticeship and Industry Training**

Alberta Trades. World Ready.